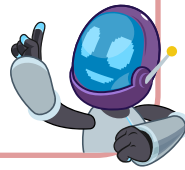


**Machu Picchu**

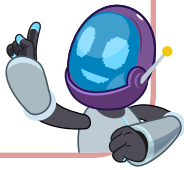
Why was Machu Picchu rediscovered?
What were some of the effects of that rediscovery?

Cause and Effect

**Machu Picchu**

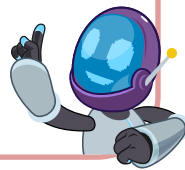
What are some of the innovations, or clever ways of doing things, that were used in the building of Machu Picchu? Use evidence from the text to support your answer.

Make Inferences / Draw Conclusions

**Machu Picchu**

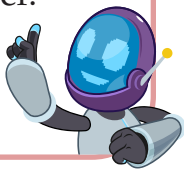
What does the layout of Machu Picchu reveal about how the Inca people used to live and what was important to them?

Make Inferences / Draw Conclusions

**Machu Picchu**

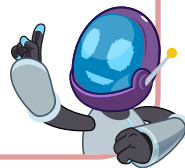
How does Machu Picchu's history help readers understand why the city was built and why it was abandoned? Use evidence from the text to support your answer.

Analyze

**Machu Picchu**

How do the photographs and diagram add to the ideas described in the text of the section "Building Machu Picchu"?

Elements of Nonfiction

**Machu Picchu**

Do you agree with the author's claim that Machu Picchu is "one of the most mysterious and haunting places in the world"? Why or why not?

Evaluate

